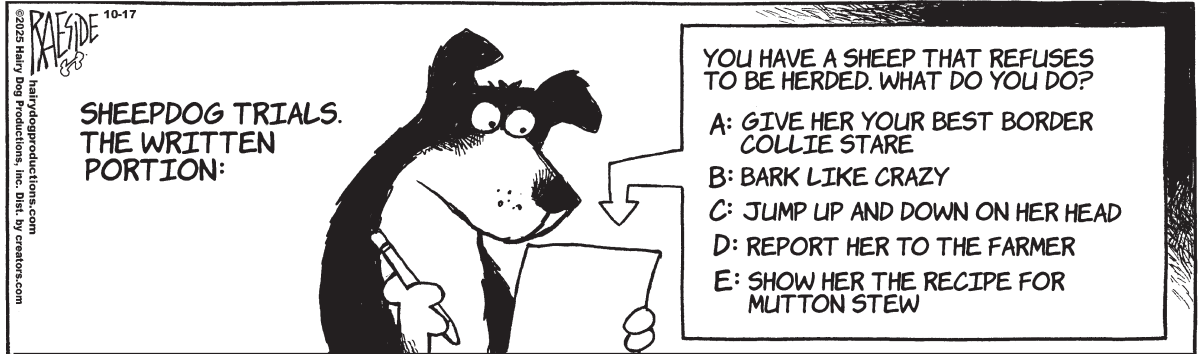


DIVERSIONS

Blondie



The Other Coast

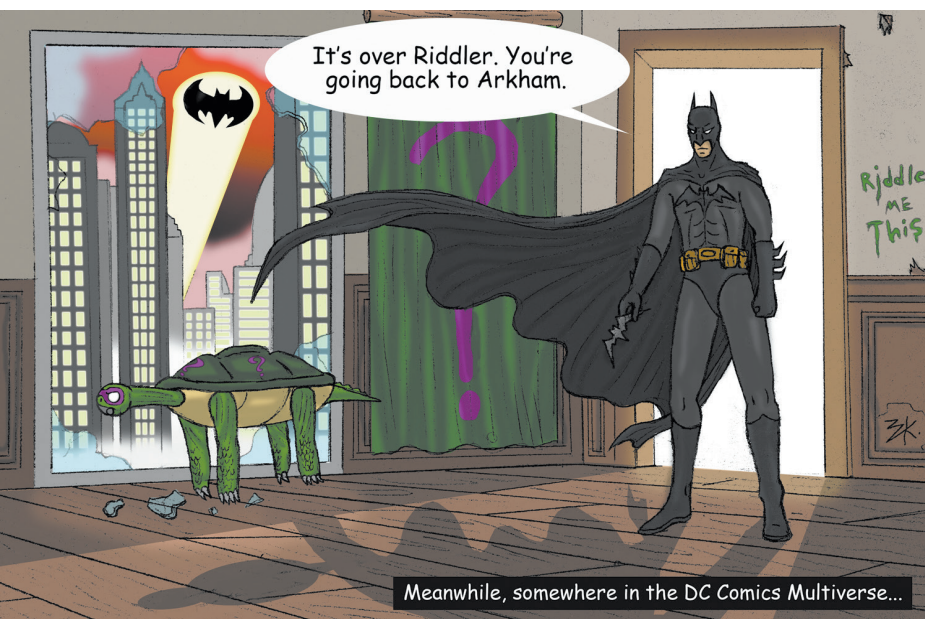


"Surreality: Break Out" by Zac Kinsman

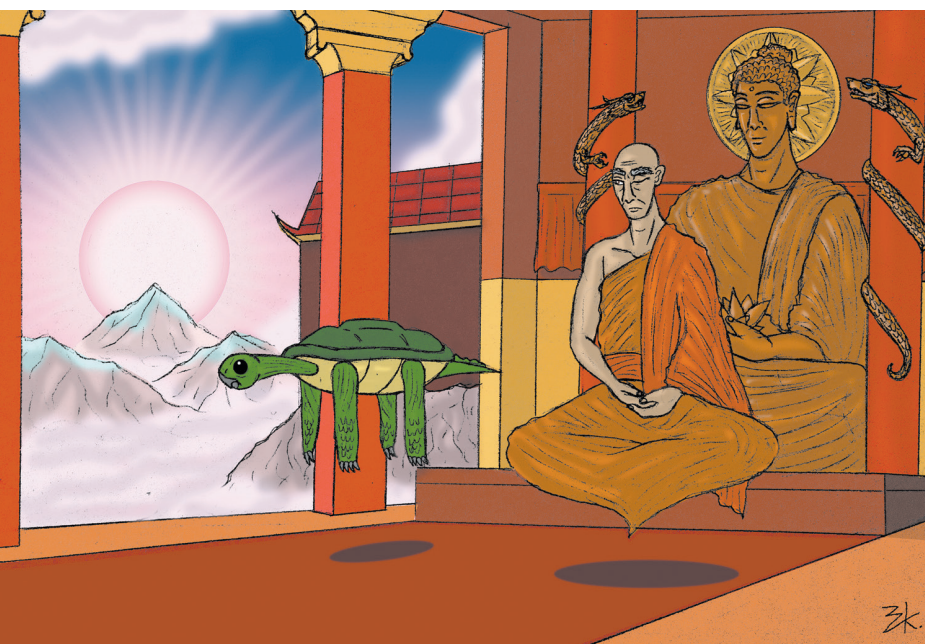


"The Adventures of Jim The Levitating Turtle" by Zac Kinsman

"Turtle Me This" (ref: Batman)



"Nirvana"



by Young

by Adrian Raeside

by Zac Kinsman

by Zac Kinsman

HOROSCOPES

Week of Feb 11 2026



(21 March- 20 April) A local pie eating contest may be interrupted by enraged mathematicians who misread the flyer.



(24 Sept- 23 Oct) Trying new recipes in the kitchen may lead to a career as an accomplished chef, or more likely to a slightly burnt pot roast.



(21 April-21 May) Challenging your employer to a duel by pistols this week may be ill advised. Best to wait until after Family Day.



(24 Oct- 22 Nov) An abundance of scorpions may be occupying your root cellar. A flame thrower may be of use. If there are no scorpions, feel free to ignore this horoscope.



(22 May- 21 June) A white bearded man with a heavy Greek accent may repeatedly ask you increasingly probing questions that you find invasive and annoying. Don't worry though, it's just the ghost of Socrates.



(23 Nov- 21 Dec) A lack of proper communication with an old high school rival may lead to you both owning competing karate dojos.



(22 June- 23 July) A change in your views may be prompted by a sudden and unexpected concussion.



(22 Dec- 20 Jan) The most important thing you can do is hold onto who you are at your core as the world changes around you. Unless you're a jerk at your core, in which case changing might be a good call.



(24 July- 23 Aug) This Valentines Day, give the person you care about a gift that conveys how you really feel about them. Perhaps a rose or a chair with nails sticking out of the seat.



(21 Jan- 19 Feb) You must look within yourself to save yourself from your other self. Only then will your true self reveal itself.



(24 Aug- 23 Sept) Be careful if you decide to travel the Oregon Trail by covered wagon. There's a high chance of dying from dysentery.



(20 Feb- 20 March) Trying to find your way in this world can be difficult. GPS helps.



Cartoons

by Steve Nease



Find Bonus Comics Every Issue
At WWW.MIDDLESEXBANNER.CA